



Seeking support of the Climate and City Resilience Committee for Technical Trial – DSLAM EV Charging

Committee Meeting 9th November 2023

Peter Wade

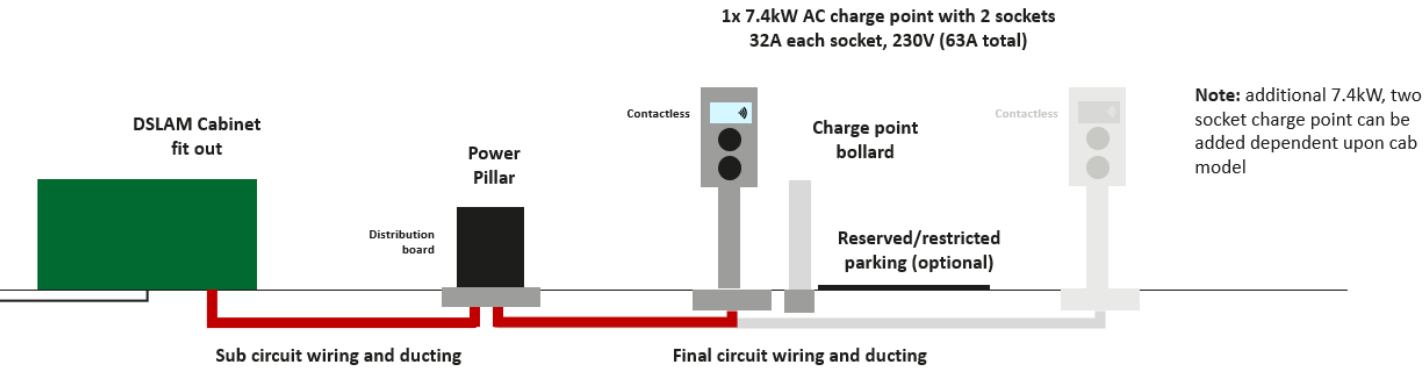
Paul Fyfe

Daniel Lunney

Allen Irwin

openreac

Proposed Design & Infrastructure



Key Points

1. Seeking support of the Committee to run a 3 - 6 month technical trial
2. Commitment that should any of the sites not meet the goals of the trial these can / will be removed at no cost to Council
3. A successful trial forms the basis of a wider rollout, subject to commercial sign off in BT Group
4. No cost to End users during trial
5. Reservation of space is optional – not required for Pilot

LOW kW Charger	Up to 15 miles for a 1 hour charge
STANDARD kW Charger	Up to 30 miles for a 1 hour charge
FAST kW Charger	Up to 90 miles for a 1 hour charge
RAPID kW Charger	Up to 90 miles for a 30 minute charge
ULTRA kW Charger	Up to 200 miles for a 30 minute charge



Chargepoint bollard style proposed for trial



Concept example

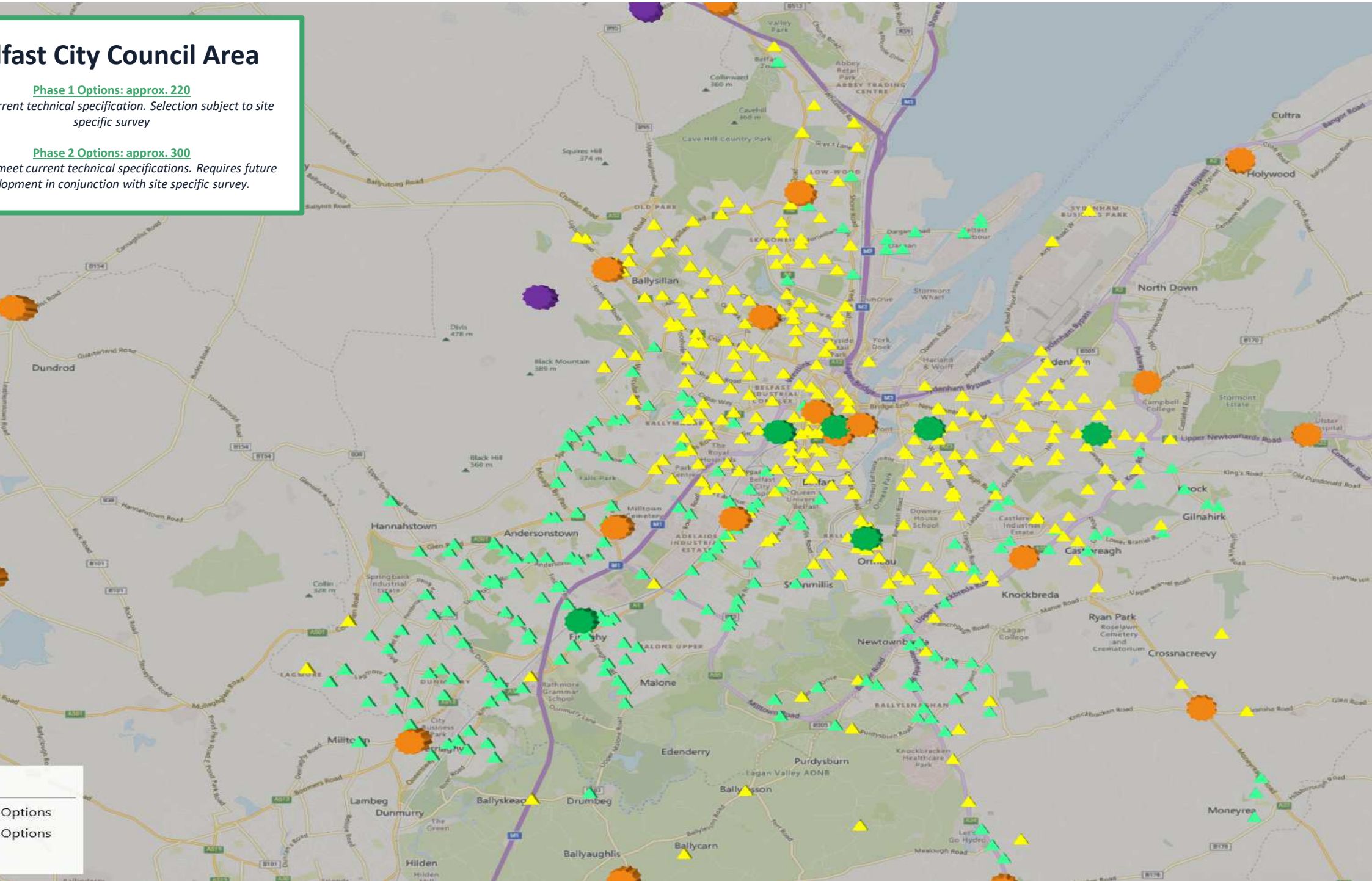
Belfast City Council Area

Phase 1 Options: approx. 220

meet current technical specification. Selection subject to site specific survey

Phase 2 Options: approx. 300

meet current technical specifications. Requires future development in conjunction with site specific survey.



Options
Options

Location of the Pilot Sites

Further available in Appendix

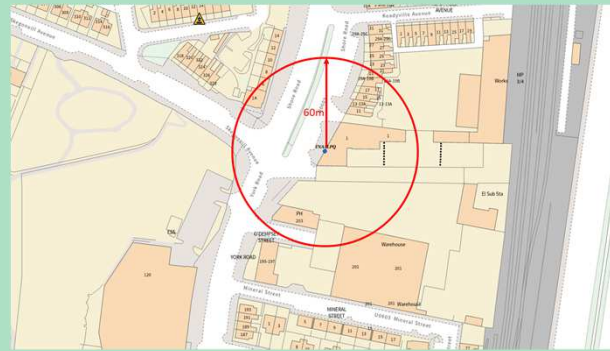
ORMEAU ROAD, ORMEAU, BELFAST, BT7 3FS

- 5 min short walk
- Homes / MDUs
- Shops / Cafes / Restaurants
- Businesses



SKEGONEILL STREET, BELFAST, BT15 3JL

- 5 min short walk
- Homes / MDUs
- Shops / Cafes / Restaurants
- Businesses
- Football Stadium
- Leisure Centre



INTERSECTION LANDSEER STREET/STRANMILLIS ROAD, BELFAST, BT9

- 5 min short walk
- Homes / MDUs
- Queen's University buildings
- Ulster Museum
- Shops / Cafes / Restaurants
- Businesses
- Botanic Park



Thank You
Questions?

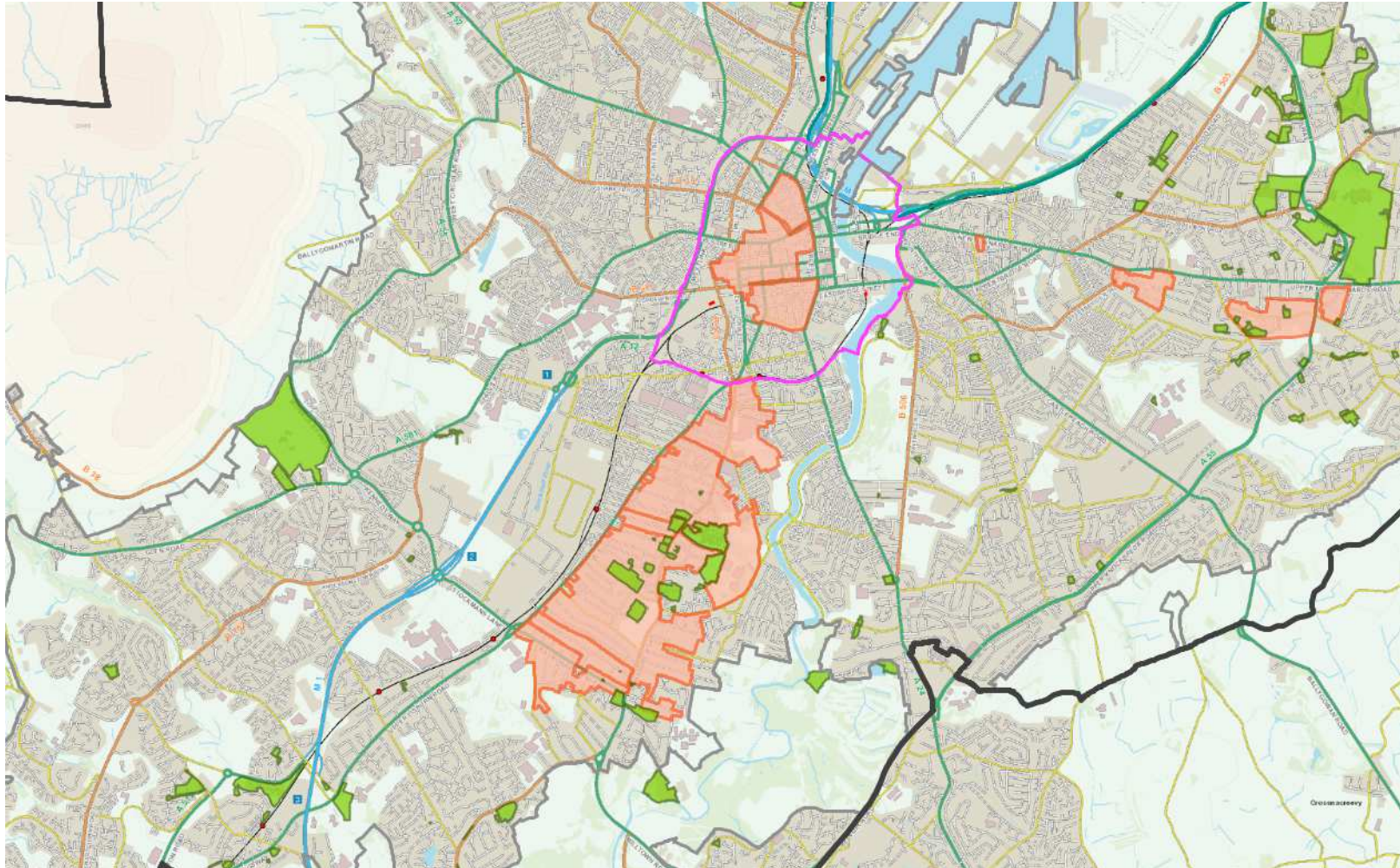


Appendix



Tree Preservation Order (TPO) and Conservation Area Map

Dublin City Council Area



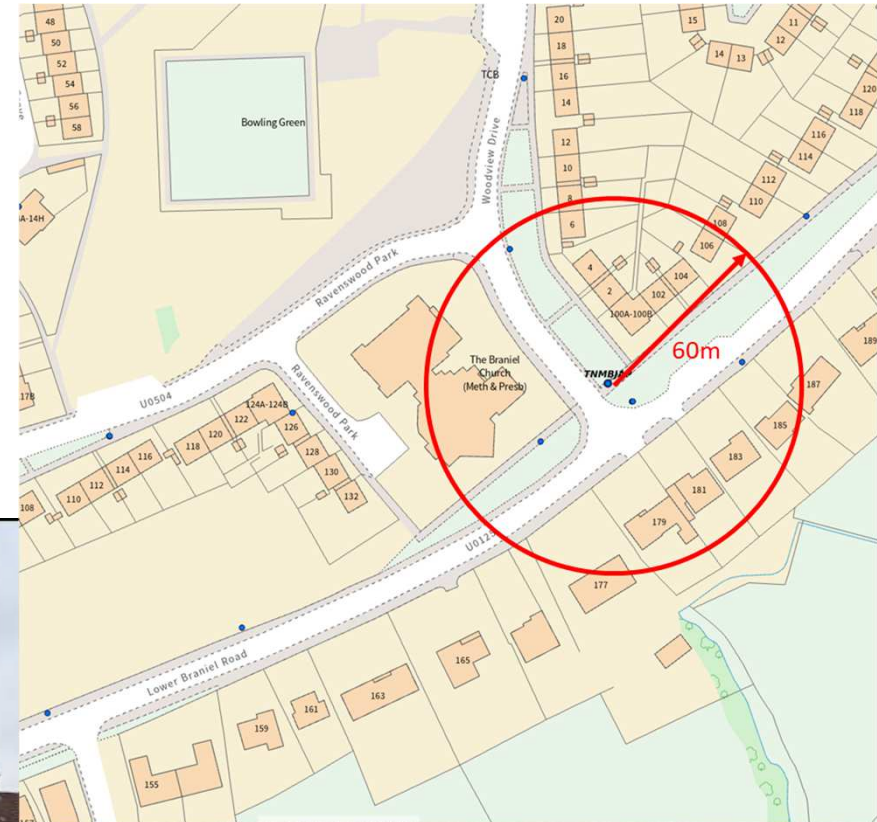
Source: [Tree Preservation Order \(TPO\) and Conservation Area Map](#)

MBJAP

Belfast City Council
Exchange: CREGAGH

WOODVIEW DR, BELFAST, CASTLEREAGH BT5 7PY

- in short walk
- Homes
- Church
- Community Centre

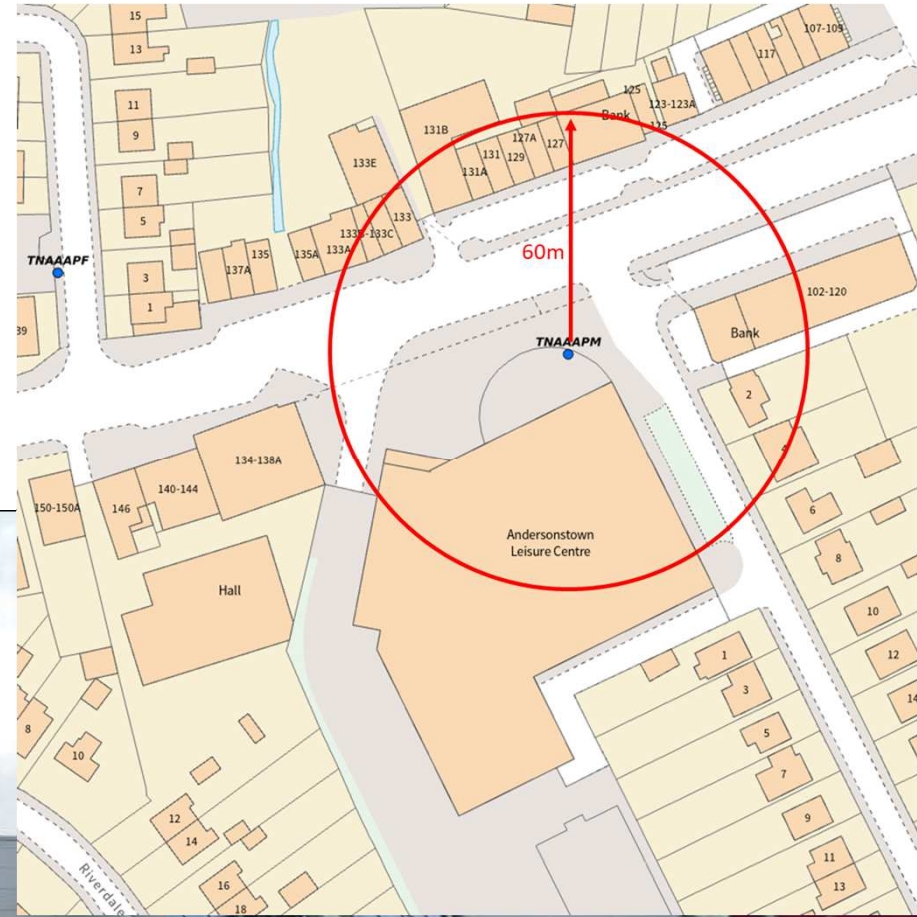


AAAPM

Belfast City Council
Exchange: Belfast North

1-133 ANDERSONSTOWN RD, BELFAST, BT11 9BT

- in short walk
- Homes / MDUs
- Shops / Cafes / Restaurants
- Businesses
- Leisure Centre
- Playing field

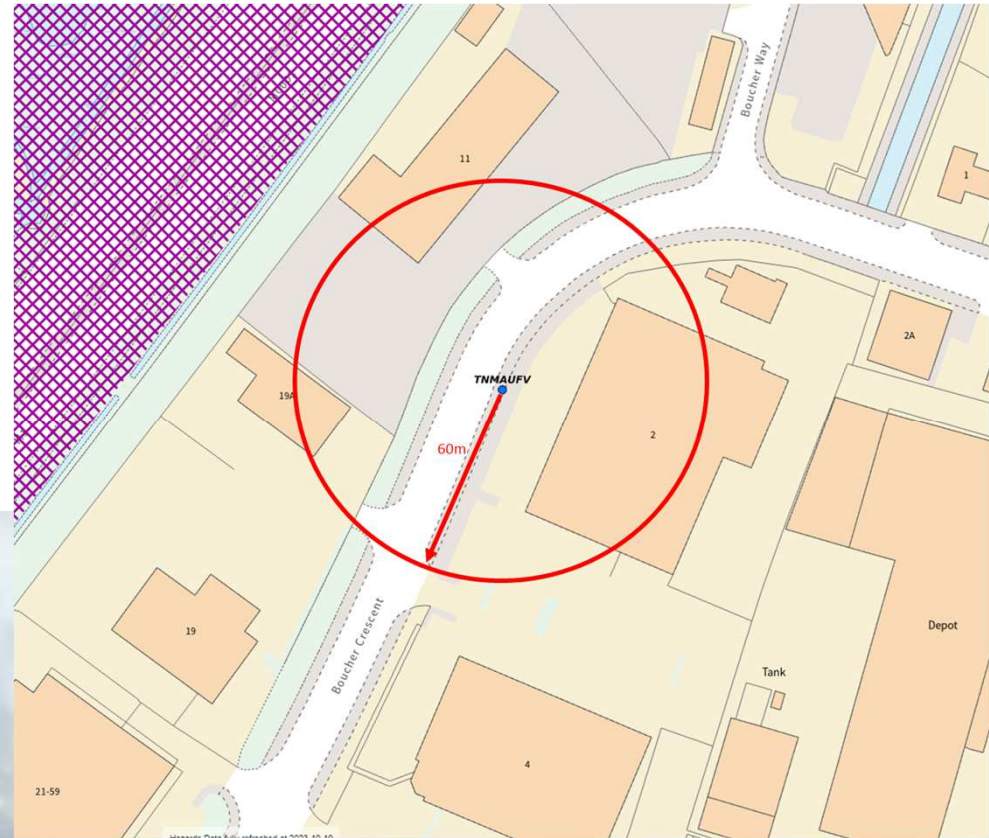


MAUFV

Belfast City Council
Exchange: Malone

BOUCHER CRESENT, BELFAST, BT12 6QU

- in short walk
- Businesses
- Shops / Cafes / Restaurants
- Boucher Road Retail Park



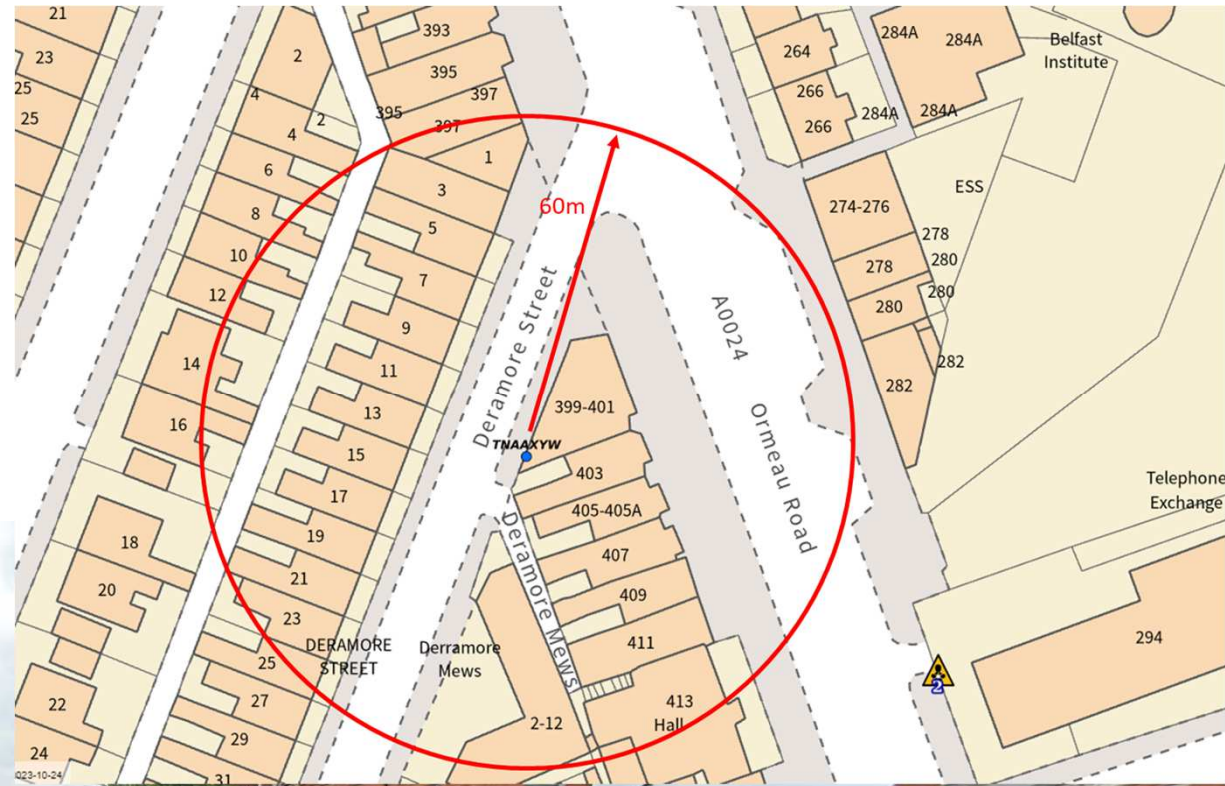
TNAAXYW

Belfast City Council
Exchange: Ormeau

1 Ormeau Rd, Ormeau, Belfast BT7 3FS

- in short walk
- Homes / MDUs
- Shops / Cafes / Restaurants
- Businesses

eland
ps

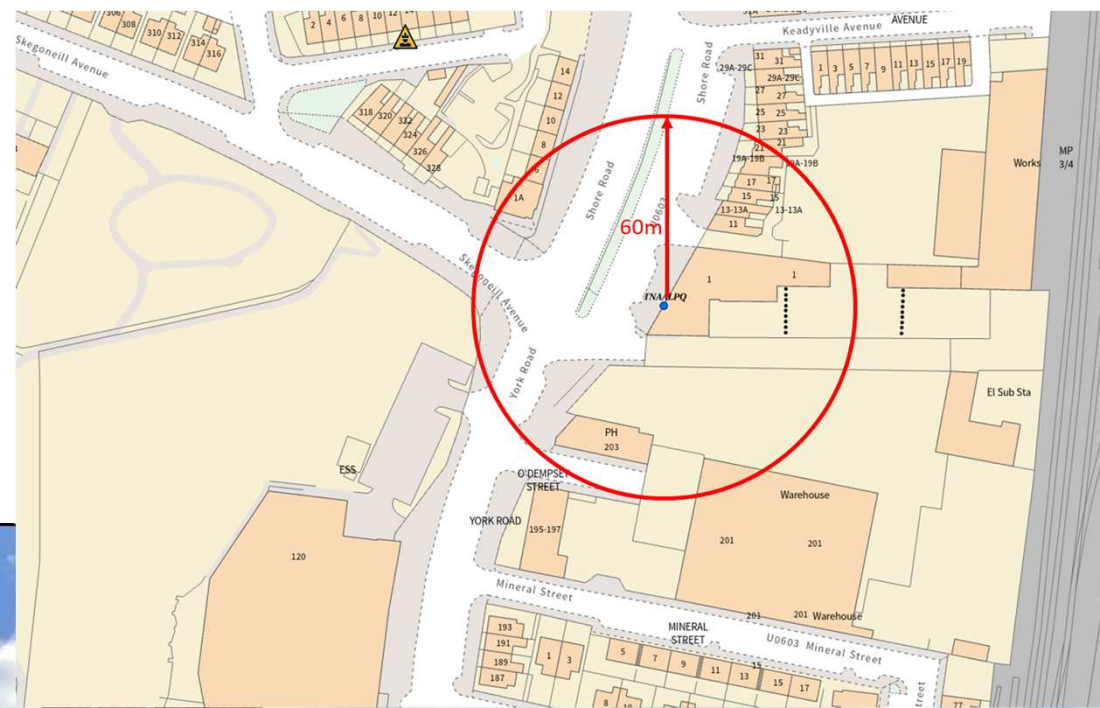


AALPQ

Belfast City Council
Exchange: Fortwilliam

SKEGONEILL ST, BELFAST, BT15 3JL

- in short walk
- Homes / MDUs
- Shops / Cafes / Restaurants
- Businesses
- Football Stadium
- Leisure Centre



AAXUY

Belfast City Council
Exchange: Malone

LOCATION LANDSEER STREET/STRANMILLIS ROAD, BELFAST, MALONE

- in short walk
- Homes / MDUs
- Queen's University buildings
- Ulster Museum
- Shops / Cafes / Restaurants
- Businesses
- Botanic Park

